



Minster Road NW2

Parkheath  
*Sold on Service*





# Minster Road, NW2

## Asking Price £525,000, Share of Freehold

### Camden Band D

- Spacious split level 2 bedroom 2 bathroom flat
- 705 sq ft / 65.4 sq m
- Bright 15'9" reception room
- Perfect opportunity to renovate to ones taste
- 11'8" master bedroom with en-suite bathroom and fitted storage
- Separate kitchen
- Chain Free and Share of Freehold
- 9 minute walk to Kilburn station (Jubilee line)
- Excellent location, easy access to West Hampstead and Kilburn amenities
- Great local bus routes plus 10 minute walk to Brondesbury overground station

Belsize Park  
208 Haverstock Hill  
NW3 2AG  
Sales 020 7431 1234  
Lettings 020 7431 3104  
nw3@parkheath.com

South Hampstead  
8a Canfield Gardens  
NW6 3BS  
Sales 020 7625 4567  
Lettings 020 7644 0800  
nw6@parkheath.com

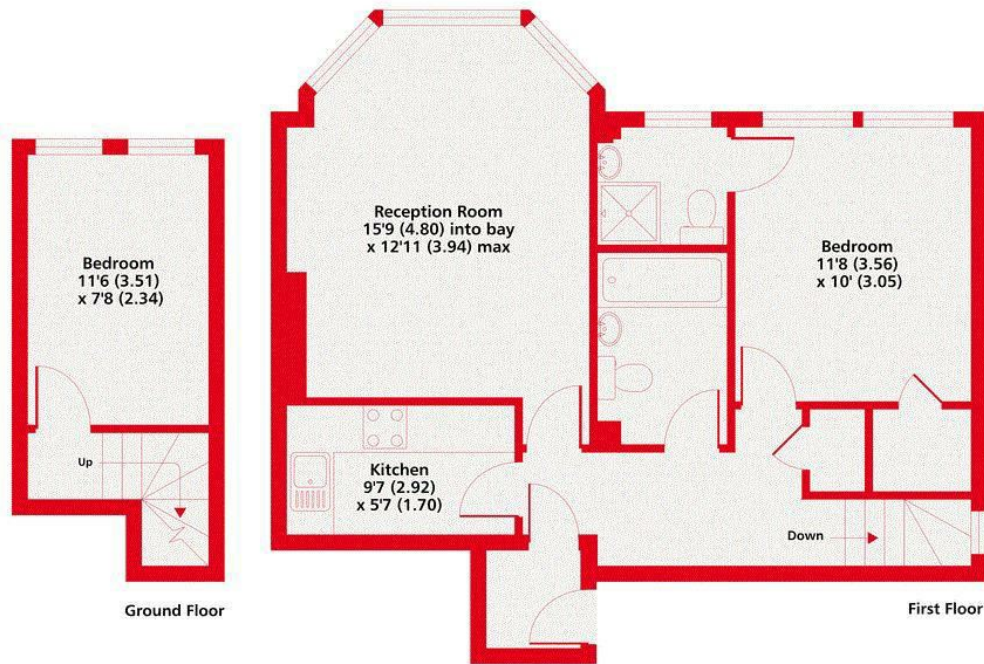
West Hampstead  
192 West End Lane  
NW6 1SG  
Sales & Lettings  
Tel 020 7794 7111  
192@parkheath.com

Kentish Town  
148 Kentish Town Rd  
NW1 9QB  
Tel 020 7485 0400  
kt@parkheath.com

Kensal Rise  
54-56 Chamberlayne Rd  
NW10 3JH  
Tel 020 8960 4845  
kensal@parkheath.com

Property Management  
192 West End Lane  
NW6 1SG  
020 7433 6174  
pm@parkheath.com

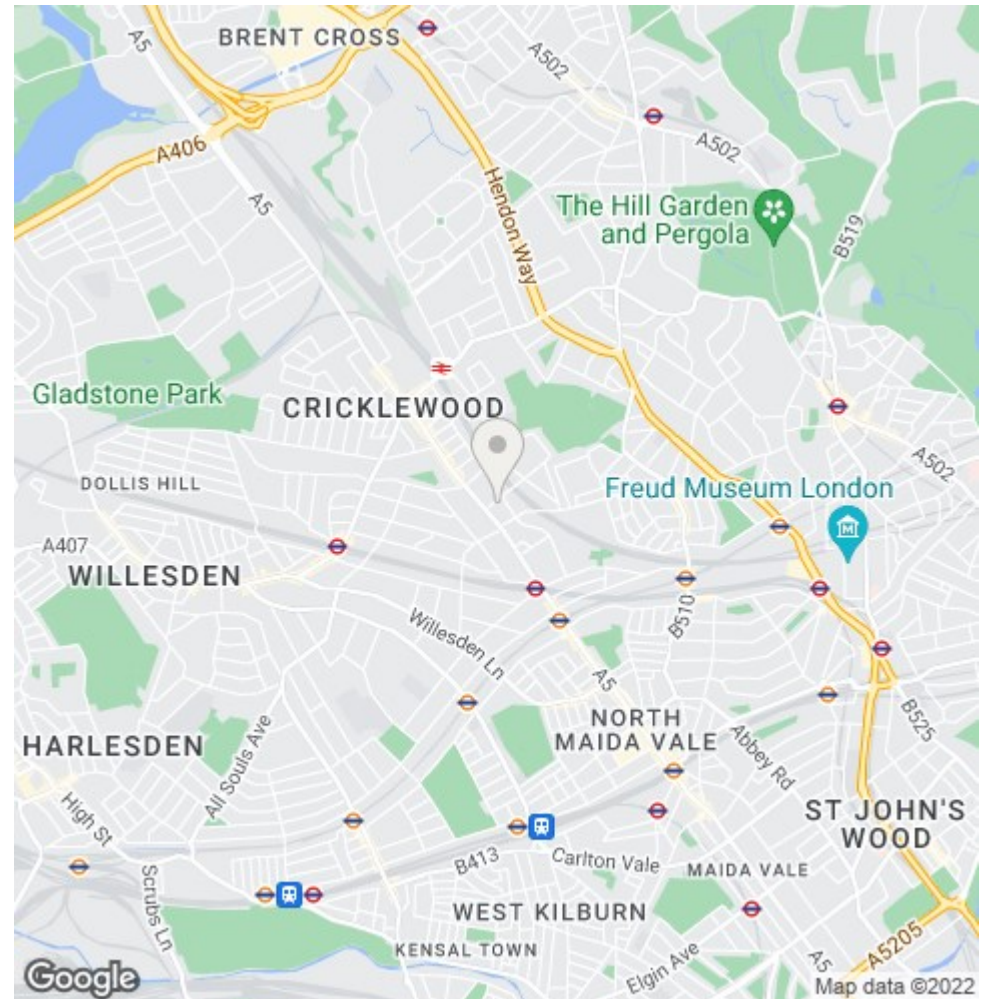
**Parkheath**  
*Sold on Service*



Minster Road, NW2  
 Approximate Area = 705 sq ft / 65.4 sq m  
 For identification only - Not to scale



Floor plan produced in accordance with RICS Property Measurement Standards incorporating International Property Measurement Standards (IPMS2 Residential). © nichecom 2021. REF: 786544



The particulars do not constitute part of an offer or contract. The particulars, including text, photographs and plans, are for the guidance only of prospective purchasers/tenants and must not be relied upon as statements of fact. The descriptions provided therein represent the opinion of the author and whilst given in good faith should not be construed as statements of fact. Nothing in these particulars shall be deemed a statement that the property is in good condition or otherwise or that any services or facilities are in good working order. All measurements are approximate